

PowerPoint 2010 Advanced



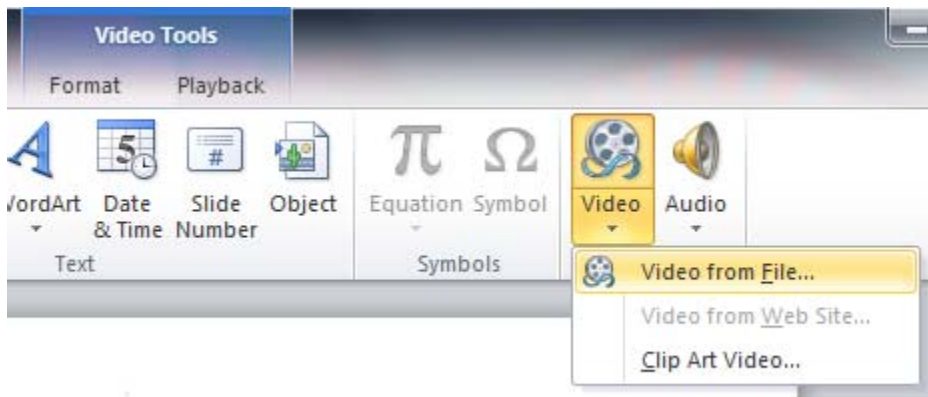
PowerPoint is currently the software most commonly used for making visual aids for presentations. It has been redesigned for the 2010 release with a much more user-friendly and intuitive layout than earlier versions of the application.

ADDING A VIDEO TO POWERPOINT:

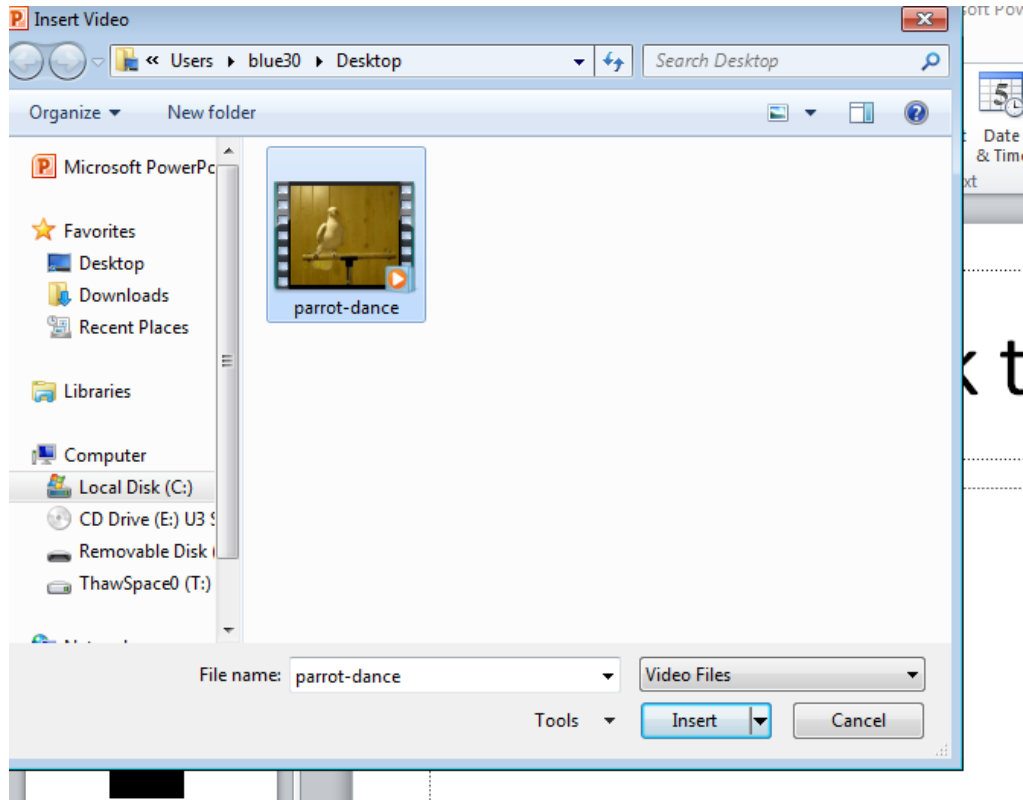
PowerPoint will automatically compress and optimize the embedded media for improved playback in presentation. [Powerpoint supports](#) the following formats(including audio):

- AVI
- WMV
- MOV
- H.264
- MP3
- WMA

Click on the Insert Tab, then click on the drop down video tab, click on video from file

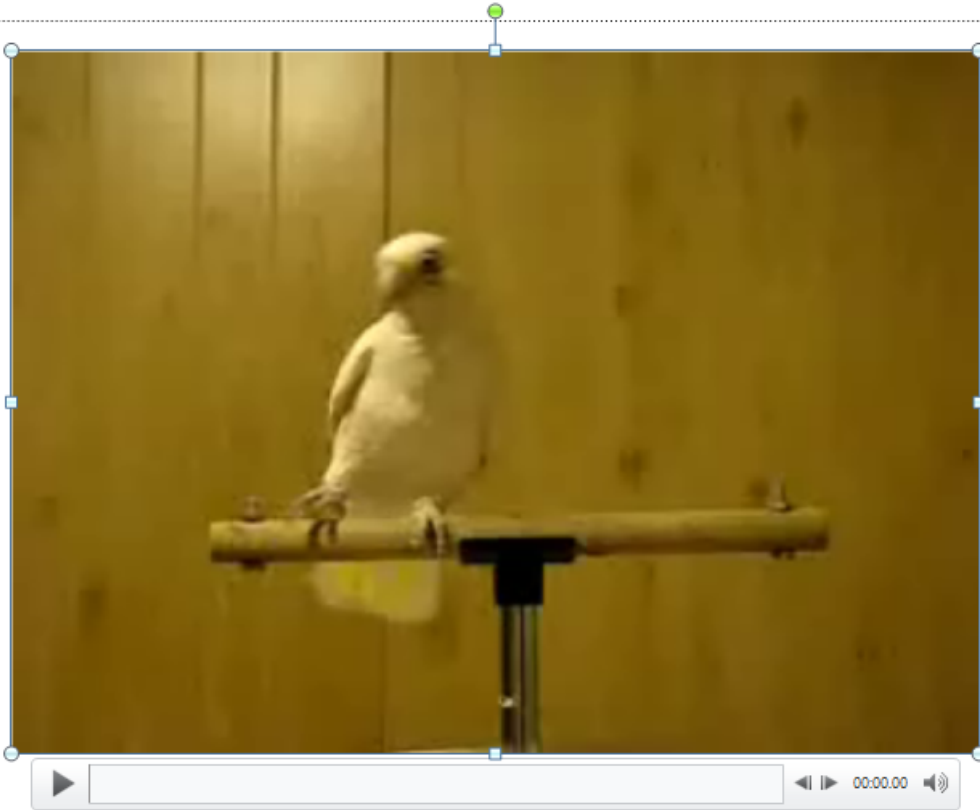


Choose which video file you want to insert, click on insert



Your video will appear in the middle of you PowerPoint presentation

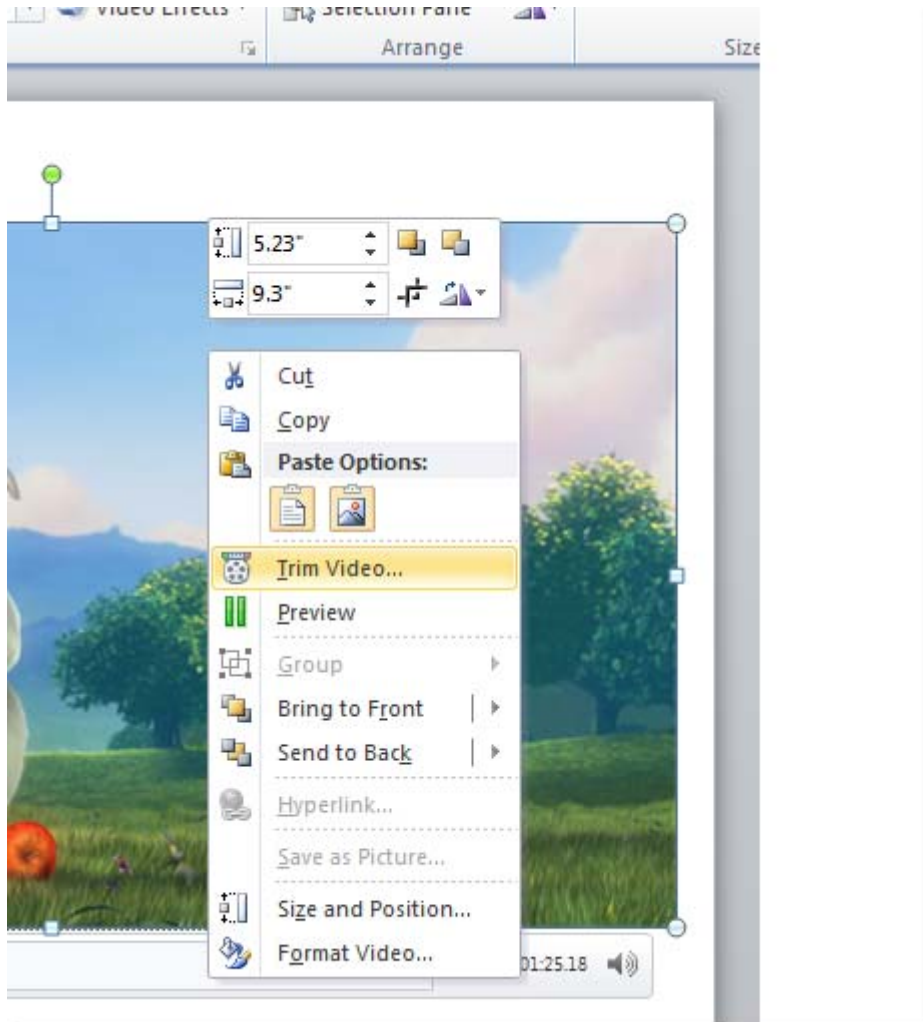
Click to add title

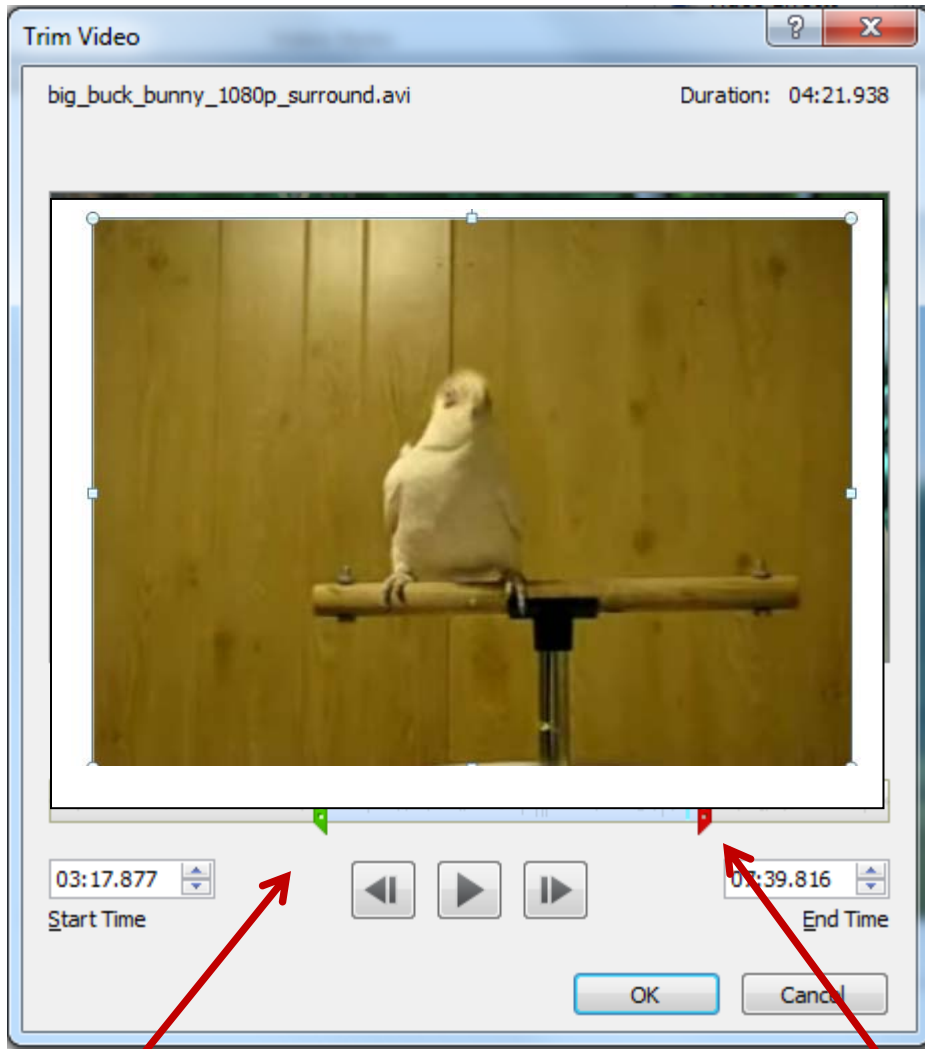


You can easily trim an unwanted section of the video, can apply different styles like fading edges, 3D rotation, live reflections, etc to your videos, and can also color the video if you think it is not matching the background of your slide.

In the screenshots below you can see how easy it is to trim a video.

Right-Click anywhere inside the video, and click on trim video



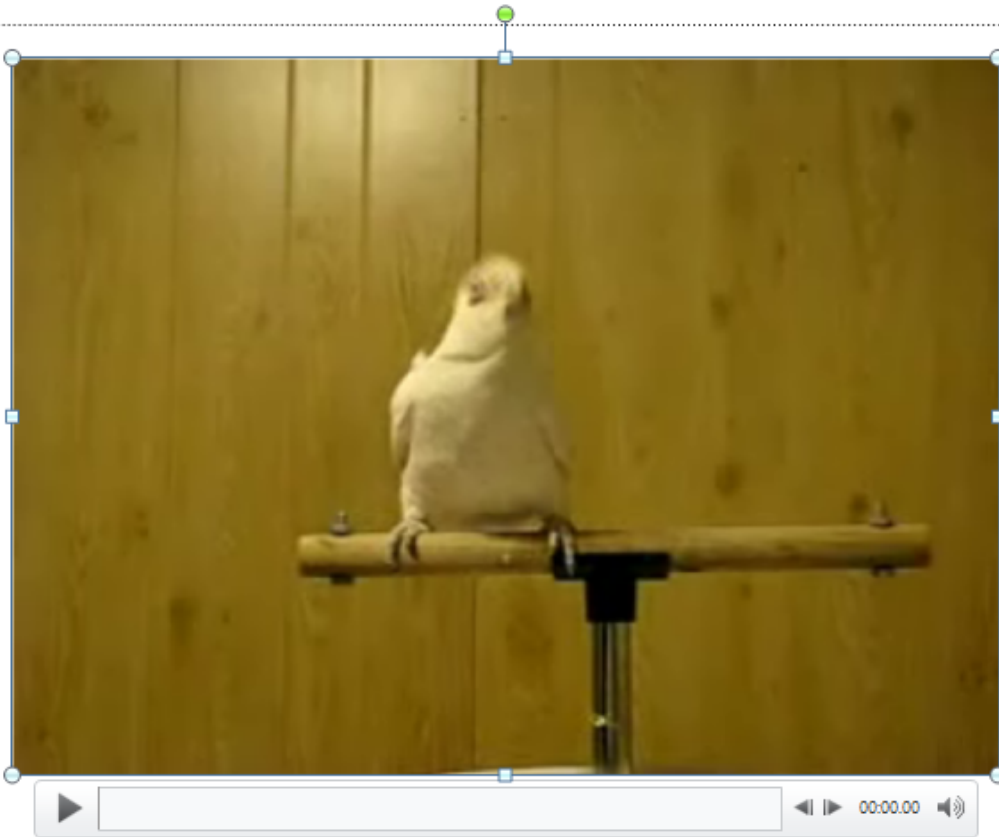


Use this the green slider to indicate where you want you video to start

Use the red slider to indicate where you want the video to end

When you have finished click on OK

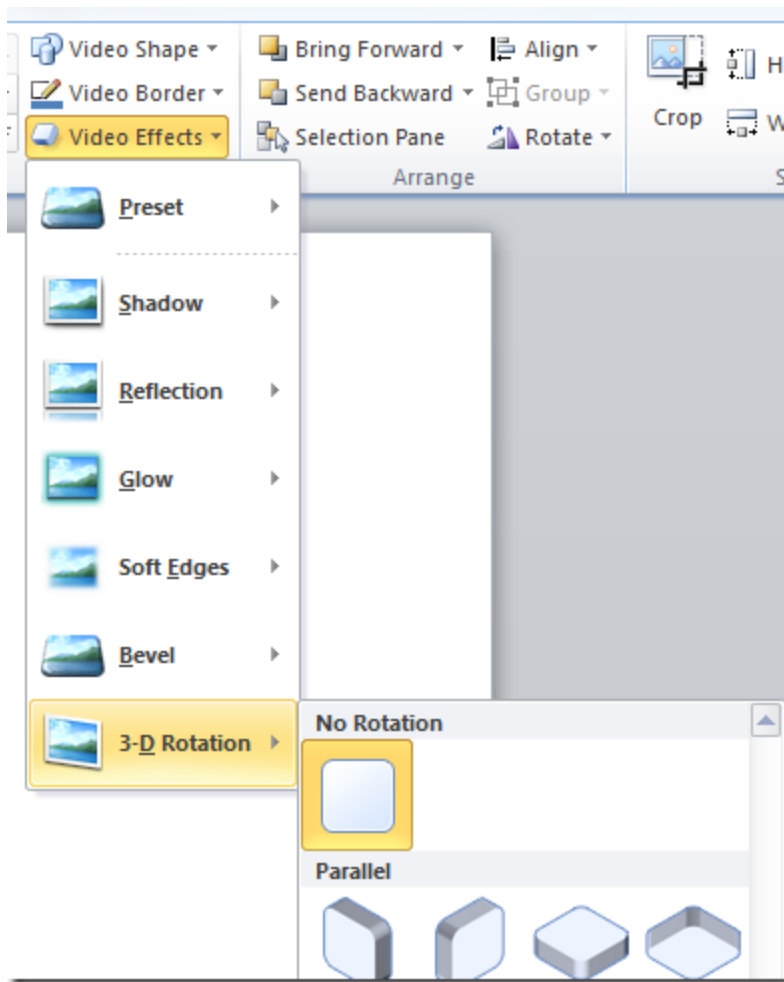
Click to add title



You can now click on play and see what the edited video file looks like

Note: Your original video file will not be affected by the changes done in the PowerPoint video editor.

There is a separate section for applying Video Shape, Video Border, and Video Effects.



Under *Corrections* you can adjust Bright and Contrast of the video by choosing the desired value.

