



## Space Planning & Capital Projects

Backfill Construction Update March 24, 2014

Late December 2013: WDF set up office in 238 and 239T  
Install plywood protection for service elevator, JJC provide keys,  
Progress and kickoff meetings commence;  
Initial Announcements to JJC for upcoming protections issued

### January 6-10/2014

Temporary Protection on floors installed on 2nd and 5th floors  
Cellar Level: Surveys taken for duct and pipe fabrication

### January 13-17/2014

Library Upper Level:  
Surveys taken for duct fabrication  
Temporary protection walls installed

### January 20-31/2014

5th floor:

- Temporary protection walls built
- Electrical disconnects
- Plumbing fixtures removed
- Demolition begins

2nd floor: Temporary protection walls built

### January 29-February 12/2014

5th Floor :

- Wall, ceiling, floors Demolition completed
- Field measuring for ducts and sprinkler

Begin layouts

2nd floor: Remove ceilings, pipe measure

Roof: Temporary partitions/Protect track

Basement (behind Library /Theatre stage):

- Build protection walls

Entry level: Build protection walls

Floors 2,3,4,5 Shaft walls- cut open/prepare intake openings

3rd floor: Plumbing disconnects- art room



5th floor south side Haaren Hall taken 2/12/2014



5th floor south side Haaren Hall taken 2/12/2014

## Space Planning & Capital Projects

### Backfill Construction Update March 24, 2014

#### February 12-19/2014

5th floor: Duct demolition

Cellar level: Ceiling removal; Electrical disconnects, Temporary lights

6th floor: Cut shaft opening (Provost file room)

E,2,3,4,5,6 Duct shaft measurements, HVAC pipe riser measurements

#### February 19-March 5/2014

Roof: North Cooling Tower demo conference with FM  
Decommission Tower, start demo

5th floor: Studs delivery , wall layout

Basement: Complete temporary egress area

Floors 2, 3, 4, 5: Field measure for steel at water pipe  
openings.

3rd floor: Build temporary walls, electrical disconnects  
Demo walls, floor North wing

6th floor: Move Provosts files, build scaffold

#### March 5-19/2014

Roof: Complete cooling tower demolition

Antennae cabling: Coordinate moves through  
metro PCS (JJC)

6th floor: Under children's bathroom  
disconnect water/electric

Basement: Library egress area- wall opening demo  
Install temporary lighting  
Sawcut and chop slab

2nd floor: Demo soffit

Cellar: Sprinkler measurements

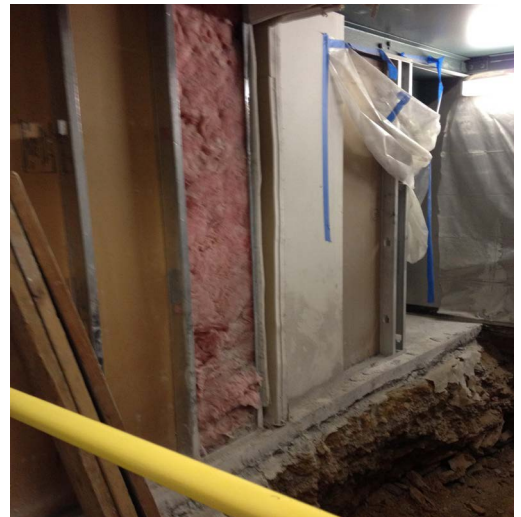
6th floor: Complete field measurements for duct

3rd floor: South side demo,  
Wall layout

HVAC duct measurements



At roof- North cooling tower demolished.



Small slab excavation basement level

## Space Planning & Capital Projects

### Backfill Construction Update March 24, 2014

March 19-April 2/ 2014

3rd Floor: Duct demolition & removal

Demo CMU wall

VCT flooring removal

North side begin wall layout

Art and Music Flooring-concrete patching in studio

5th Floor: Frame exterior walls

Electrical Rough-in

Switch to new electrical panel

Roof: Demolish Children's Center bathroom

Cellar: Preparing for 10" pipe routing over spring break



5th floor electrical rough in and framing



3rd floor-south side



5th floor framing



3rd floor north side



Concrete floor finish proposed by SBLM architects for Art & Music sculpture studio